



COMMUNITY EARLY  
LEARNING AUSTRALIA



# LEARNING & DEVELOPMENT

## JUL - DEC 2024 • CALENDAR •




**60+**  
TOPICS TO  
CHOOSE FROM

CELA's Learning & Development equips educators with knowledge that changes practice and underpins quality early education.

FOR FURTHER DETAILS OR TO BOOK:  
[www.cela.org.au/training](http://www.cela.org.au/training)



[www.cela.org.au](http://www.cela.org.au)  
[training@cela.org.au](mailto:training@cela.org.au)  
1800 157 818  
RTO ID 90842

 @communityearlylearningaustralia  
 @CELAust  
 @communityearlylearning

## SEPTEMBER

2 SEP	Emotion Coaching and Self Regulation
2 SEP	An Introduction to the Circle of Security for Early Educators
2 SEP	Engaging with the Principles of Active Supervision <b>APST ALIGNED</b>
3 SEP	Bringing the EYLF V2.0 to Life: An Overview of the How <b>APST ALIGNED</b>
4 SEP	Spotlight on the EYLF V2.0: Exploring the Changes <b>APST ALIGNED</b>
5 SEP	The Director's Toolkit: The Team: Staff Relationships
5 SEP	Bringing the EYLF V2.0 to Life Collaborative Leadership and Teamwork in Practice <b>APST ALIGNED</b>
9 SEP	Addressing Behavioural Concerns with Families
9 SEP	Supporting Children who Present With Anxiety or Stress
10, 11 & 12 SEP	CHCPRT025 - Identify & Report Children and Young People at Risk - RTO ID: 90842 3 part series <b>APST ALIGNED</b>
11 SEP	How the Exceeding Themes Influence Your Practices
11 SEP	Literacy in the Early Years <b>APST ALIGNED</b>
12 SEP	The Director's Toolkit: Administrative Responsibilities
12 SEP	5 Ways To Better Conversations With Children <b>APST ALIGNED</b>
13 SEP	Bringing the EYLF V2.0 to Life: Sustainability in Practice <b>APST ALIGNED</b>
16 SEP	Body Safety: Exploring Protection, Respect and Consent with Young Children <b>APST ALIGNED</b>
16 SEP	Supporting Confident and Capable Babies and Toddlers <b>APST ALIGNED</b>
17 SEP	Bringing the EYLF V2.0 to Life: Assessment and Evaluation for Learning, Development and Wellbeing in Practice <b>APST ALIGNED</b>
17 & 24 SEP	Acknowledging and Celebrating First Nations of Australia: A Starting Point 2 Part Series <b>APST ALIGNED</b>
17 SEP	Practical Approaches to Programming for Educators* <b>APST ALIGNED</b>
18 SEP	Bringing the EYLF V2.0 to Life: Play Based Learning and Intentionality in Practice <b>APST ALIGNED</b>
19 SEP	The Director's Toolkit: Family And Community Partnerships
19 SEP	Inquiry Based Learning <b>APST ALIGNED</b>
19 SEP	The Law and Regs for Nominated Supervisors
20 SEP	Connecting to the Joy of Children's Learning through Purposeful Observation <b>APST ALIGNED</b>
23 SEP	Bringing the EYLF V2.0 to Life: Equity, Inclusion and High Expectations in Practice <b>APST ALIGNED</b>
23 SEP	Children's Rights Children's Voices: Working With a Rights-Based Approach <b>APST ALIGNED</b>
24 SEP	Understanding Self-Assessment and Quality Improvement Planning
25 SEP	Bringing the EYLF V2.0 to Life: Cultural Responsiveness in Practice <b>APST ALIGNED</b>
25 SEP	Effective use of Technology with children <b>APST ALIGNED</b>
26 SEP	Prepare Your Team For Assessment And Rating
26 SEP	Developing scaffolding strategies to support intentional teaching <b>NEW</b>
27 SEP	Revisiting the Planning Cycle - Fresh eyes, fresh ideas <b>NEW</b>
30 SEP	Neuroscience and Behaviour <b>APST ALIGNED</b>

## OCTOBER

1 OCT	The Law and Regs for Nominated Supervisors
1 OCT	An Introduction to Reframing and Responding to Children's Behaviour <b>NEW</b>
1 & 2 OCT	Face to Face Masterclass: A Framework for Understanding and Responding to Children's Behaviour <b>NEW</b>
2 OCT	Bringing the EYLF V2.0 to Life: Assessment and Evaluation for Learning, Development and Wellbeing in Practice <b>APST ALIGNED</b>
3 OCT	Practical Approaches to Programming for Educational Leaders
3 OCT	Developing scaffolding strategies to support intentional teaching <b>NEW</b>
8 OCT	Bringing the EYLF V2.0 to Life Collaborative Leadership and Teamwork in Practice <b>APST ALIGNED</b>
8, 15, 22 & 29 OCT	Online Masterclasses: A Framework for Understanding and Responding to Children's Behaviour <b>NEW</b>
8 OCT	Bringing the EYLF V2.0 to Life: Critical Reflection and Ongoing Professional Learning in Practice <b>APST ALIGNED</b>
9 OCT	Prepare Your Team For Assessment And Rating
10, 17 & 24 OCT	CHCPRT025 - Identify & Report Children and Young People at Risk - RTO ID: 90842 3 part series <b>APST ALIGNED</b>
11 OCT	Inquiry Based Learning <b>APST ALIGNED</b>
14 OCT	5 Ways To Better Conversations With Children <b>APST ALIGNED</b>
15 OCT	Supporting Children who Present With Anxiety or Stress
15 OCT	Addressing Behavioural Concerns with Families
16 OCT	Understanding Self-Assessment and Quality Improvement Planning
17 OCT	Revisiting the Planning Cycle - Fresh eyes, fresh ideas <b>NEW</b>
18 OCT	How the Exceeding Themes Influence Your Practices
21 OCT	Children's Rights Children's Voices: Working With a Rights-Based Approach <b>APST ALIGNED</b>
22 OCT	Practical Approaches to Programming for Educators* <b>APST ALIGNED</b>
22 OCT	Developing scaffolding strategies to support intentional teaching <b>NEW</b>
23 OCT	Recognising Vulnerability to Support Children's Wellbeing and Development <b>APST ALIGNED</b>
23 OCT	Body Safety: Exploring Protection, Respect and Consent with Young Children <b>APST ALIGNED</b>
25 OCT	Connecting to the Joy of Children's Learning through Purposeful Observation <b>APST ALIGNED</b>
25 OCT	Bringing the EYLF V2.0 to Life: An Overview of the How <b>APST ALIGNED</b>
28 OCT	An Introduction to the Circle of Security for Early Educators
28 OCT	Emotion Coaching and Self Regulation
29 OCT	Bringing the EYLF V2.0 to Life: Cultural Responsiveness in Practice <b>APST ALIGNED</b>
30 OCT	Neuroscience and Behaviour <b>APST ALIGNED</b>
30 OCT	Engaging with the Principles of Active Supervision <b>APST ALIGNED</b>
31 OCT & 7 NOV	Acknowledging and Celebrating First Nations of Australia: A Starting Point 2 Part Series <b>APST ALIGNED</b>

## NOVEMBER

1 NOV	Literacy in the Early Years <b>APST ALIGNED</b>
4 NOV	Bringing the EYLF V2.0 to Life: Equity, Inclusion and High Expectations in Practice <b>APST ALIGNED</b>
4 NOV	Understanding Play Theory <b>APST ALIGNED</b>
5, 6 & 7 NOV	CHCPRT025 - Identify & Report Children and Young People at Risk - RTO ID: 90842 3 part series <b>APST ALIGNED</b>
5 NOV	How the Exceeding Themes Influence Your Practices
6 NOV	Supporting Children who Present With Anxiety or Stress
6 NOV	Emotion Coaching and Self Regulation
7 NOV	Practical Approaches to Programming for Educational Leaders
8 NOV	Inquiry Based Learning <b>APST ALIGNED</b>
11 NOV	An Introduction to Reframing and Responding to Children's Behaviour <b>NEW</b>
11 NOV	Neuroscience and Behaviour <b>APST ALIGNED</b>
11 NOV	Engaging with the Principles of Active Supervision <b>APST ALIGNED</b>
12 NOV	Bringing the EYLF V2.0 to Life Collaborative Leadership and Teamwork in Practice <b>APST ALIGNED</b>
12 NOV	Bringing the EYLF V2.0 to Life: Critical Reflection and Ongoing Professional Learning in Practice <b>APST ALIGNED</b>
13 NOV	Understanding Self-Assessment and Quality Improvement Planning
14 NOV	Bringing the EYLF V2.0 to Life: Play Based Learning and Intentionality in Practice <b>APST ALIGNED</b>
14 NOV	Revisiting the Planning Cycle - Fresh eyes, fresh ideas <b>NEW</b>
15 NOV	Bringing the EYLF V2.0 to Life: Assessment and Evaluation for Learning, Development and Wellbeing in Practice <b>APST ALIGNED</b>
18 NOV	The Law and Regs for Nominated Supervisors
18 NOV	Supporting Confident and Capable Babies and Toddlers <b>APST ALIGNED</b>
19 NOV	An Introduction to the Circle of Security for Early Educators
19 NOV	Addressing Behavioural Concerns with Families
20 NOV	Bringing the EYLF V2.0 to Life: An Overview of the How <b>APST ALIGNED</b>
20 NOV	Body Safety: Exploring Protection, Respect and Consent with Young Children <b>APST ALIGNED</b>
21 NOV	5 Ways To Better Conversations With Children <b>APST ALIGNED</b>
25 NOV	Revisiting the Planning Cycle - Fresh eyes, fresh ideas <b>NEW</b>
26 NOV	Effective use of Technology with children <b>APST ALIGNED</b>
26 NOV	Developing scaffolding strategies to support intentional teaching <b>NEW</b>
27 NOV	Bringing the EYLF V2.0 to Life: Sustainability in Practice <b>APST ALIGNED</b>
27 NOV	Compliance In Everyday Practice

## DECEMBER

2 DEC	5 Ways To Better Conversations With Children <b>APST ALIGNED</b>
2 DEC	Bringing the EYLF V2.0 to Life: Cultural Responsiveness in Practice <b>APST ALIGNED</b>
3 DEC	Bringing the EYLF V2.0 to Life: Play Based Learning and Intentionality in Practice <b>APST ALIGNED</b>
3, 4 & 5 DEC	CHCPRT025 - Identify & Report Children and Young People at Risk - RTO ID: 90842 3 part series <b>APST ALIGNED</b>
4 DEC	Children's Rights Children's Voices: Working With a Rights-Based Approach <b>APST ALIGNED</b>
5 DEC	Connecting to the Joy of Children's Learning through Purposeful Observation <b>APST ALIGNED</b>
6 DEC	Bringing the EYLF V2.0 to Life: Critical Reflection and Ongoing Professional Learning in Practice <b>APST ALIGNED</b>
9 DEC	Bringing the EYLF V2.0 to Life: Equity, Inclusion and High Expectations in Practice <b>APST ALIGNED</b>
10 DEC	Neuroscience and Behaviour <b>APST ALIGNED</b>
11 DEC	Body Safety: Exploring Protection, Respect and Consent with Young Children <b>APST ALIGNED</b>

## SELF-PACED ONLINE STUDY

Leadership: Empowering and Engaging the Team — Micro Credential

Understanding Neuroscience to Support Children's Behaviour — Micro Credential **APST ALIGNED**

CHCPRT025 Identify and Report Children and Young People at Risk (RTO ID 90842)

Child Protection NSW Refresher

Approved Provider and Governance Portal

Management Committee Training Portal

FOR FURTHER DETAILS OR TO BOOK:

[www.cela.org.au/training](http://www.cela.org.au/training)



[www.cela.org.au](http://www.cela.org.au)  
[training@cela.org.au](mailto:training@cela.org.au)  
 1800 157 818  
 RTO ID 90842



@communityearlylearningaustralia



@CELAust



@communityearlylearning

NOTE: Times and dates are subject to change. Please check the online PDF version of this calendar for additional sessions and updates: [www.cela.org.au/training](http://www.cela.org.au/training)

## TRAINING SESSIONS BY NAME

5 Ways To Better Conversations With Children <b>APST ALIGNED</b>	<a href="#">LEARN MORE</a>	Inquiry Based Learning <b>APST ALIGNED</b>	<a href="#">LEARN MORE</a>
Acknowledging and Celebrating First Nations of Australia: A Starting Point- Webinar 2 Part Series <b>APST ALIGNED</b>	<a href="#">LEARN MORE</a>	Leadership: Empowering and Engaging the Team — Micro Credential SELF PACED	<a href="#">LEARN MORE</a>
Addressing Behavioural Concerns with Families	<a href="#">LEARN MORE</a>	Leading your Team through Change	<a href="#">LEARN MORE</a>
An Introduction to the Circle of Security for Early Educators	<a href="#">LEARN MORE</a>	Literacy in the Early Years <b>APST ALIGNED</b>	<a href="#">LEARN MORE</a>
An Introduction to Reframing and Responding to Children's Behaviour <b>NEW</b>	<a href="#">LEARN MORE</a>	Loose Parts Play <b>APST ALIGNED</b>	<a href="#">LEARN MORE</a>
Am I Ready?: Supporting transitions to school <b>NEW</b>	<a href="#">LEARN MORE</a>	Making Meaningful Music With Our Early Learners	<a href="#">LEARN MORE</a>
Approved Provider and Governance Portal - Self-Paced Online	<a href="#">LEARN MORE</a>	Management Committee Training Portal	<a href="#">LEARN MORE</a>
Body Safety: Exploring Protection, Respect and Consent with Young Children <b>APST ALIGNED</b>	<a href="#">LEARN MORE</a>	Neuroscience and Behaviour <b>APST ALIGNED</b>	<a href="#">LEARN MORE</a>
Bringing the EYLF V2.0 to Life: An Overview of the How <b>APST ALIGNED</b>	<a href="#">LEARN MORE</a>	Numeracy in the Early Years <b>APST ALIGNED</b>	<a href="#">LEARN MORE</a>
Bringing the EYLF V2.0 to Life: Assessment and Evaluation for Learning, Development and Wellbeing in Practice <b>APST ALIGNED</b>	<a href="#">LEARN MORE</a>	OOSH Active Supervision	<a href="#">LEARN MORE</a>
Bringing the EYLF V2.0 to Life: Collaborative Leadership and Teamwork in Practice <b>APST ALIGNED</b>	<a href="#">LEARN MORE</a>	Play Theory And Behaviour	<a href="#">LEARN MORE</a>
Bringing the EYLF V2.0 to Life: Critical Reflection and Ongoing Professional Learning in Practice <b>APST ALIGNED</b>	<a href="#">LEARN MORE</a>	Playing Musically With Our Babies and Toddlers	<a href="#">LEARN MORE</a>
Bringing the EYLF V2.0 to Life: Cultural Responsiveness in Practice <b>APST ALIGNED</b>	<a href="#">LEARN MORE</a>	Practical Approaches to Programming for Educational Leaders	<a href="#">LEARN MORE</a>
Bringing the EYLF V2.0 to Life: Equity, Inclusion and High Expectations in Practice <b>APST ALIGNED</b>	<a href="#">LEARN MORE</a>	Practical Approaches to Programming for Educators <b>APST ALIGNED</b>	<a href="#">LEARN MORE</a>
Bringing the EYLF V2.0 to Life: Play Based Learning and Intentionality in Practice <b>APST ALIGNED</b>	<a href="#">LEARN MORE</a>	Prepare Your Team For Assessment And Rating	<a href="#">LEARN MORE</a>
Bringing the EYLF V2.0 to Life: Sustainability in Practice <b>APST ALIGNED</b>	<a href="#">LEARN MORE</a>	Recognising Vulnerability to Support Children's Wellbeing and Development <b>APST ALIGNED</b>	<a href="#">LEARN MORE</a>
Building Genuine Partnerships with Families and Communities	<a href="#">LEARN MORE</a>	Revisiting the Planning Cycle - Fresh eyes, fresh ideas <b>NEW</b>	<a href="#">LEARN MORE</a>
CHCPRT025 - Identify & Report Children and Young People at Risk (RTO ID: 90842) - 3 Part Webinar <b>APST ALIGNED</b>	<a href="#">LEARN MORE</a>	So Now You Are On The Committee	<a href="#">LEARN MORE</a>
CHCPRT025 Identify and Report Children and Young People at Risk (RTO ID 90842) - Self-Paced Online	<a href="#">LEARN MORE</a>	Spotlight on the EYLF V2.0: Exploring the Changes <b>APST ALIGNED</b>	<a href="#">LEARN MORE</a>
Child Protection NSW Refresher - Self-Paced Online	<a href="#">LEARN MORE</a>	Standard Mental Health First Aid - Face to Face 2 Part Series	<a href="#">LEARN MORE</a>
Children's Rights Children's Voices: Working With a Rights-Based Approach <b>APST ALIGNED</b>	<a href="#">LEARN MORE</a>	Supporting Children who Present With Anxiety or Stress	<a href="#">LEARN MORE</a>
Compliance in Everyday Practice	<a href="#">LEARN MORE</a>	Supporting Confident and Capable Babies and Toddlers <b>APST ALIGNED</b>	<a href="#">LEARN MORE</a>
Connecting to the Joy of Children's Learning through Purposeful Observation <b>APST ALIGNED</b>	<a href="#">LEARN MORE</a>	The Director's Toolkit: Administrative Responsibilities	<a href="#">LEARN MORE</a>
Dealing Effectively With Complaints	<a href="#">LEARN MORE</a>	The Director's Toolkit: Compliance & Quality	<a href="#">LEARN MORE</a>
Developing scaffolding strategies to support intentional teaching <b>NEW</b>	<a href="#">LEARN MORE</a>	The Director's Toolkit: Family And Community Partnerships	<a href="#">LEARN MORE</a>
Educator Wellbeing: Filling an Empty Bucket	<a href="#">LEARN MORE</a>	The Director's Toolkit: Leadership & Advocacy	<a href="#">LEARN MORE</a>
Effective Supervision in Family Day Care	<a href="#">LEARN MORE</a>	The Director's Toolkit: The Team, Staff Relationships	<a href="#">LEARN MORE</a>
Effective use of Technology with children <b>APST ALIGNED</b>	<a href="#">LEARN MORE</a>	The Director's Toolkit: Working with Management, Planning & Policy	<a href="#">LEARN MORE</a>
Emotion Coaching And Self-regulation	<a href="#">LEARN MORE</a>	The Law and Regs for Nominated Supervisors	<a href="#">LEARN MORE</a>
Engaging with the Principles of Active Supervision <b>APST ALIGNED</b>	<a href="#">LEARN MORE</a>	Understanding Neuroscience to Support Children's Behaviour — Micro Credential <b>APST ALIGNED</b>	<a href="#">LEARN MORE</a>
Establishing Inclusive Practice: Conversations and Inclusion Plans	<a href="#">LEARN MORE</a>	Understanding and responding to behaviours that challenge <b>NEW</b>	<a href="#">LEARN MORE</a>
How the Exceeding Themes Influence your Practice	<a href="#">LEARN MORE</a>	Understanding Play Theory <b>APST ALIGNED</b>	<a href="#">LEARN MORE</a>
		Understanding Self-Assessment and Quality Improvement Planning	<a href="#">LEARN MORE</a>

FOR FURTHER DETAILS OR TO BOOK: [WWW.CELA.ORG.AU/TRAINING](http://WWW.CELA.ORG.AU/TRAINING)



# Four ways to learn with CELA



## CALENDAR TRAINING

Join one of our popular live webinars - many sessions are scheduled on multiple times and dates in order to maximise availability.

[www.cela.org.au/training](http://www.cela.org.au/training)



## INSERVICE

Can't make the time or date of a calendar session or need something delivered specifically for your team? CELA can bring the training to you, no matter where you are.

[www.cela.org.au/training/in-service](http://www.cela.org.au/training/in-service)



## INDIVIDUAL MENTORING

We offer a unique mentoring program, completely tailored to your needs and specifications.

[www.cela.org.au/training/mentoring](http://www.cela.org.au/training/mentoring)



## SELF PACED

Explore our range of self-paced, online courses covering topics such as child protection, leadership, management committees, approved providers and behaviour support.

[www.cela.org.au/training/self-paced](http://www.cela.org.au/training/self-paced)

“

Training is so important and I believe CELA do a fabulous job. Especially with regards to providing access for remote services!”

Judy  
Preschool Director

“

I would recommend this course to other organisations because you will be reassured that educators have received high-quality, comprehensive training.

Andrea  
Educational Leader, Children's Services

# Why train with CELA?



## TRUSTED BY '000S

Over 9,100 ECEC professionals like you boosted their knowledge with CELA last year.



## COMMUNITY-DRIVEN

As a not-for-profit peak body, profits made from our training courses are funnelled back into our advocacy and professional development initiatives, so training with us benefits the entire sector.



## FLEXIBLE

We offer live webinar, self-paced and inservice options to cater to all service requirements and staff availabilities.



## ON THE PULSE

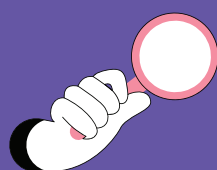
We offer over 50 topics including live webinar and self-paced options to fit every learning style and level of proficiency, with new topics added regularly.



## LEVERAGE OUR EXPERTISE

Our programs are designed and facilitated by seasoned experts, ensuring you're always learning from sector-leading professionals.

MEMBERS RECEIVE  
17% DISCOUNT ON  
TRAINING CALENDAR  
SESSIONS



Explore our calendar: [www.cela.org.au/training](http://www.cela.org.au/training)