

# LEARNING & DEVELOPMENT

## JAN- JUN 2025 • CALENDAR •




**60+**  
TOPICS TO  
CHOOSE FROM

CELA's Learning & Development equips educators with knowledge that changes practice and underpins quality early education.

**FIND OUT MORE & BOOK:**  
[www.cela.org.au/training](http://www.cela.org.au/training)



[www.cela.org.au](http://www.cela.org.au)  
[training@cela.org.au](mailto:training@cela.org.au)  
1800 157 818  
RTO ID 90842

 @communityearlylearningaustralia  
 @CELAust  
 @communityearlylearning

# JANUARY

DAY	DATE	TIME	SESSION
TUE	21 JAN	10:00am - 12:00pm	CHCPRT025 - Identify & Report Children and Young People at Risk - RTO ID: 90842
WED	22 JAN		3 part series <b>APST ALIGNED</b>
THU	23 JAN		
TUE	28 JAN	10:00am - 12:30pm	Body Safety: Exploring Protection, Respect and Consent with Young Children <b>APST ALIGNED</b>
TUE	28 JAN	1:00pm - 3:00pm	Revisiting the Planning Cycle - Fresh eyes, fresh ideas <b>NEW</b>
WED	29 JAN	11:00am - 1:00pm	The Law and Regs for Nominated Supervisors
WED	29 JAN	1:00pm - 3:00pm	5 Ways To Better Conversations With Children <b>APST ALIGNED</b>
THU	30 JAN	10:00am - 12:00pm	An Introduction to Reframing and Responding to Children's Behaviour
THU	30 JAN	1:00pm - 3:00pm	Practical Approaches to Programming for Educators* <b>APST ALIGNED</b>
FRI	31 JAN	10:00am - 12:00pm	Engaging with Principles of Active Supervision <b>APST ALIGNED</b>

BOOK JANUARY SESSION: [www.cela.org.au/training?Month=1](http://www.cela.org.au/training?Month=1)

*NOTE: Times and dates are subject to change. Please check the website for additional sessions and updates: [www.cela.org.au/training](http://www.cela.org.au/training)*

# FEBRUARY

DAY	DATE	TIME	SESSION
MON	03 FEB	10:00am - 12:00pm	Compliance In Everyday Practice
MON	03 FEB	1:00pm - 3:00pm	Observation in Action: Essentials for Early Childhood Educators <b>NEW</b>
TUE	04 FEB	10:00am - 11:00am	Music – who can live without it? <b>NEW</b>
TUE	04 FEB	4:00pm - 7:00pm	NSW Child Safe Standards and Child Protection Overview - For leaders, directors and nominated supervisors
WED	05 FEB	11:00am - 1:00pm	Bringing the EYLF V2.0 to Life: An Overview of the How <b>APST ALIGNED</b>
WED	05 FEB	2:00pm - 4:00pm	Extending children’s learning through the art of intentional teaching
THU	06 FEB	10:00am - 12:00pm	Principles in Action: Equity, Inclusion and High Expectations <b>APST ALIGNED</b>
THU	06 FEB 13 FEB	2:30pm - 5:00pm	Acknowledging and Celebrating First Nations of Australia: A Starting Point 2 Part Series <b>APST ALIGNED</b>
FRI	07 FEB	10:00am - 12:00pm	Professional and ethical practice in action <b>NEW</b>
MON	10 FEB	10:00am - 12:00pm	Supporting Confident and Capable Babies and Toddlers <b>APST ALIGNED</b>
TUE	11 FEB	10:00am - 12:00pm	Principles in Action: Collaborative Leadership and Teamwork <b>APST ALIGNED</b>
TUE	11 FEB 18 FEB 25 FEB	2:00pm - 4:00pm	CHCPRT025 Identify and Report Children and Young People at Risk (RTO ID 90842) 3 part series <b>APST ALIGNED</b>
WED	12 FEB	10:00am - 1:00pm	NSW Child Safe Standards and Child Protection Overview - For educators, teachers, and team members
WED	12 FEB	3:00pm - 5:00pm	Practical Approaches to Programming for Educational Leaders
MON	17 FEB	10:00am - 12:00pm	Strong, Kind, Committed: Navigating the Circle of Security <b>NEW</b>
TUE	18 FEB	11:00am - 1:00pm	An Introduction to Reframing and Responding to Children’s Behaviour
WED	19 FEB	10:00am - 12:00pm	Practices in Action: Play Based Learning and Intentionality <b>APST ALIGNED</b>
WED	19 FEB	1:00pm - 3:30pm	Body Safety: Exploring Protection, Respect and Consent with Young Children <b>APST ALIGNED</b>
THU	20 FEB	1:00pm - 3:00pm	Recognising Vulnerability to Support Children’s Wellbeing and Development <b>APST ALIGNED</b>
THU	20 FEB	3:00pm - 5:00pm	Revisiting the Planning Cycle - Fresh eyes, fresh ideas <b>NEW</b>
FRI	21 FEB	10:00am - 12:30pm	Connecting to the Joy of Children’s Learning through Purposeful Observation <b>APST ALIGNED</b>
MON	24 FEB	10:00am - 12:00pm	Engaging with Principles of Active Supervision <b>APST ALIGNED</b>
TUE	25 FEB + 4, 11, 18 & 25 MAR	10:00am - 12:00pm	A Framework for Understanding and Responding to Children’s Behaviour Masterclass (5 x 2hour webinars)
WED	26 FEB	10:00am - 12:00pm	Neuroscience and Behaviour <b>APST ALIGNED</b>
WED	26 FEB	12:00pm - 12:45pm	Essential Insights: Promoting resilience amongst children and educators <b>FREE MEMBER WEBINAR</b>
WED	26 FEB	5:00pm - 7:00pm	The Law and Regs for Nominated Supervisors
THU	27 FEB	9:00am - 4:00pm	A Framework for Understanding and Responding to Children’s Behaviour Masterclass (2 days) <b>FACE TO FACE</b>
FRI	28 FEB		
THU	27 FEB	1:00pm - 3:00pm	Embracing Neurodiversity: A strengths-based approach <b>NEW</b>

BOOK FEBRUARY SESSION: [www.cela.org.au/training?Month=2](http://www.cela.org.au/training?Month=2)

NOTE: Times and dates are subject to change. Please check the website for additional sessions and updates: [www.cela.org.au/training](http://www.cela.org.au/training)

# MARCH

DAY	DATE	TIME	SESSION	
MON	03 MAR	2:00pm - 4:00pm	Principles in Action: Critical Reflection and Ongoing Professional Learning	APST ALIGNED
TUE	04 MAR	1:00pm - 3:00pm	Professional and ethical practice in action	NEW
WED	05 MAR	2:00pm - 4:00pm	Extending children's learning through the art of intentional teaching	
THU	06 MAR	10:00am - 12:00pm	Inquiry Based Learning	APST ALIGNED
THU	06 MAR	4:00pm - 6:00pm	The Director's Toolkit: Compliance & Quality	
MON	10 MAR	10:00am - 12:00pm	Supporting Confident and Capable Babies and Toddlers	APST ALIGNED
TUE	11 MAR 18 MAR	1:00pm - 3:30pm	Acknowledging and Celebrating First Nations of Australia: A Starting Point 2 Part Series	APST ALIGNED
WED	12 MAR 19 MAR 26 MAR	10:00am - 12:00pm	CHCPRT025 - Identify & Report Children and Young People at Risk - RTO ID: 90842 3 part series	APST ALIGNED
WED	12 MAR	11:00am - 1:00pm	Strong, Kind, Committed: Navigating the Circle of Security	NEW
WED	12 MAR	2:00pm - 4:00pm	Effective use of Technology with children	APST ALIGNED
THU	13 MAR	4:00pm - 6:00pm	The Director's Toolkit: Administrative Responsibilities	
MON	17 MAR	10:00am - 12:00pm	Practical Approaches to Programming for Educators*	APST ALIGNED
MON	17 MAR	3:00pm - 5:00pm	Children's Rights Children's Voices: Working With a Rights-Based Approach	APST ALIGNED
THU	20 MAR	4:00pm - 6:00pm	The Director's Toolkit: Working With Management: Planning & Policy	
FRI	21 MAR	10:00am - 12:30pm	Prepare Your Team For Assessment And Rating	
MON	24 MAR	10:00am - 12:00pm	Principles in Action: Sustainability	APST ALIGNED
MON	24 MAR	12:00pm - 1:00pm	Music – who can live without it?	NEW
TUE	25 MAR	3:00pm - 5:30pm	Body Safety: Exploring Protection, Respect and Consent with Young Children	APST ALIGNED
WED	26 MAR	1:00pm - 3:00pm	The Law and Regs for Nominated Supervisors	
THU	27 MAR	10:00am - 12:00pm	Practices in Action: Assessment and Evaluation for Learning, Development and Wellbeing	APST ALIGNED
THU	27 MAR	4:00pm - 6:00pm	The Director's Toolkit: Leadership & Advocacy	
FRI	28 MAR	10:00am - 12:00pm	Neuroscience and Behaviour	APST ALIGNED
MON	31 MAR	1:00pm - 3:00pm	Observation in Action: Essentials for Early Childhood Educators	NEW
MON	31 MAR	2:00pm - 4:00pm	Revisiting the Planning Cycle - Fresh eyes, fresh ideas	NEW

BOOK MARCH SESSION: [www.cela.org.au/training?Month=3](http://www.cela.org.au/training?Month=3)

NOTE: Times and dates are subject to change. Please check the website for additional sessions and updates: [www.cela.org.au/training](http://www.cela.org.au/training)

# APRIL

DAY	DATE	TIME	SESSION
WED	02 APR	10:00am - 12:00pm	Extending children's learning through the art of intentional teaching
WED	02 APR	2:00pm - 5:00pm	NSW Child Safe Standards and Child Protection Overview - For leaders, directors and nominated supervisors
THU	03 APR	2:00pm - 4:00pm	Engaging with the Principles of Active Supervision <b>APST ALIGNED</b>
THU	03 APR	4:00pm - 6:00pm	The Director's Toolkit: The Team: Staff Relationships
FRI	04 APR	10:00am - 12:30pm	Literacy in the Early Years <b>APST ALIGNED</b>
MON	07 APR	2:00pm - 4:00pm	Principles in Action: Equity, Inclusion and High Expectations <b>APST ALIGNED</b>
TUE	08 APR	10:00am - 12:30pm	Connecting to the Joy of Children's Learning through Purposeful Observation <b>APST ALIGNED</b>
TUE	08 APR	2:00pm - 4:00pm	Principles in Action: Collaborative Leadership and Teamwork <b>APST ALIGNED</b>
WED	09 APR	10:00am - 1:00pm	NSW Child Safe Standards and Child Protection Overview - For educators, teachers, and team members
WED	09 APR	1:30pm - 3:30pm	Bringing the EYLF V2.0 to Life: An Overview of the How <b>APST ALIGNED</b>
THU	10 APR	10:00am - 12:00pm	Principles in Action: Critical Reflection and Ongoing Professional Learning <b>APST ALIGNED</b>
THU	10 APR	4:00pm - 6:00pm	The Director's Toolkit: Family And Community Partnerships
FRI	11 APR	10:00am - 12:30pm	Understanding Self-Assessment and Quality Improvement Planning
MON	14 APR	10:00am - 12:00pm	Supporting Confident and Capable Babies and Toddlers <b>APST ALIGNED</b>
MON	14 APR	1:00pm - 3:00pm	Practical Approaches to Programming for Educational Leaders
TUE	15 APR	12:00pm - 2:00pm	Am I Ready? Supporting Transitions to School
WED	16 APR	10:00am - 12:00pm	5 Ways To Better Conversations With Children <b>APST ALIGNED</b>
TUE	22 APR	10:00am - 12:00pm	Professional and ethical practice in action <b>NEW</b>
WED	23 APR	10:00am - 12:30pm	Body Safety: Exploring Protection, Respect and Consent with Young Children <b>APST ALIGNED</b>
WED	23 APR	1:00pm - 3:00pm	Practices in Action: Play Based Learning and Intentionality <b>APST ALIGNED</b>
MON	28 APR	11:00am - 1:00pm	Observation in Action: Essentials for Early Childhood Educators <b>NEW</b>
MON	28 APR	2:00pm - 4:00pm	CHCPRT025 Identify and Report Children and Young People at Risk (RTO ID 90842) 3 part series <b>APST ALIGNED</b>
TUE	29 APR		
WED	30 APR		
TUE	29 APR	11:00am - 1:00pm	Understanding Play Theory <b>APST ALIGNED</b>
WED	30 APR	12:00pm - 12:45pm	Essential Insights <b>FREE MEMBER WEBINAR</b>

BOOK APRIL SESSION: [www.cela.org.au/training?Month=4](http://www.cela.org.au/training?Month=4)

NOTE: Times and dates are subject to change. Please check the website for additional sessions and updates: [www.cela.org.au/training](http://www.cela.org.au/training)

# MAY

DAY	DATE	TIME	SESSION
THU	01 MAY	11:00am - 12:00pm	Music – who can live without it? <b>NEW</b>
THU	01 MAY	2:00pm - 4:00pm	Bringing the EYLF V2.0 to Life: An Overview of the How <b>APST ALIGNED</b>
THU	01 MAY	5:00pm - 7:00pm	Embracing Neurodiversity: A strengths-based approach <b>NEW</b>
TUE	06 MAY	10:00am - 12:00pm	The Director's Toolkit: Administrative Responsibilities
TUE	06 MAY	2:00pm - 4:00pm	Principles in Action: Sustainability <b>APST ALIGNED</b>
WED	07 MAY	10:00am - 12:00pm	Strong, Kind, Committed: Navigating the Circle of Security <b>NEW</b>
THU	08 MAY	10:00am - 12:00pm	An Introduction to Reframing and Responding to Children's Behaviour
THU	08 MAY	1:00pm - 3:00pm	Engaging with Principles of Active Supervision <b>APST ALIGNED</b>
FRI	09 MAY	10:00am - 12:00pm	Effective use of Technology with children <b>APST ALIGNED</b>
MON	12 MAY	3:00pm - 5:00pm	Inquiry Based Learning <b>APST ALIGNED</b>
TUE	13 MAY	10:00am - 12:00pm	The Director's Toolkit: Compliance & Quality
TUE	13 MAY	2:00pm - 4:00pm	Recognising Vulnerability to Support Children's Wellbeing and Development <b>APST ALIGNED</b>
WED	14 MAY 21 MAY 28 MAY	10:00am - 12:00pm	CHCPRT025 Identify and Report Children and Young People at Risk (RTO ID 90842) 3 part series <b>APST ALIGNED</b>
WED	14 MAY	2:00pm - 4:00pm	Extending children's learning through the art of intentional teaching
THU	15 MAY	10:00am - 12:00pm	Children's Rights Children's Voices: Working With a Rights-Based Approach <b>APST ALIGNED</b>
MON	19 MAY	1:00pm - 3:30pm	Practices in Action: Cultural responsiveness <b>APST ALIGNED</b>
MON	19 MAY	4:00pm - 6:00pm	Neuroscience and Behaviour <b>APST ALIGNED</b>
TUE	20 MAY	10:00am - 12:00pm	The Director's Toolkit: Family And Community Partnerships
TUE	20 MAY	1:00pm - 3:30pm	Prepare Your Team For Assessment And Rating
WED	21 MAY	5:00pm - 7:00pm	The Law and Regs for Nominated Supervisors
THU	22 MAY 29 MAY	10:00am - 12:30pm	Acknowledging and Celebrating First Nations of Australia: A Starting Point 2 Part Series <b>APST ALIGNED</b>
THU	22 MAY	11:00am - 1:30pm	Body Safety: Exploring Protection, Respect and Consent with Young Children <b>APST ALIGNED</b>
MON	26 MAY	11:00am - 1:00pm	Practical Approaches to Programming for Educators* <b>APST ALIGNED</b>
TUE	27 MAY	10:00am - 12:00pm	The Director's Toolkit: Leadership & Advocacy
THU	29 MAY	3:00pm - 5:00pm	Revisiting the Planning Cycle - Fresh eyes, fresh ideas <b>NEW</b>
FRI	30 MAY	10:00am - 12:00pm	Professional and ethical practice in action <b>NEW</b>

BOOK MAY SESSION: [www.cela.org.au/training?Month=5](http://www.cela.org.au/training?Month=5)

NOTE: Times and dates are subject to change. Please check the website for additional sessions and updates: [www.cela.org.au/training](http://www.cela.org.au/training)

# JUNE

DAY	DATE	TIME	SESSION
MON	02 JUN	1:00pm - 3:00pm	Compliance In Everyday Practice
TUE	03 JUN	10:00am - 12:00pm	The Director's Toolkit: The Team: Staff Relationships
TUE	03 JUN	2:00pm - 4:00pm	Principles in Action: Sustainability <b>APST ALIGNED</b>
WED	04 JUN	10:00am - 12:00pm	Am I Ready? Supporting Transitions to School
THU	05 JUN 12 JUN	10:00am - 12:30pm	Acknowledging and Celebrating First Nations of Australia: A Starting Point 2 Part Series <b>APST ALIGNED</b>
THU	05 JUN	2:00pm - 4:00pm	An Introduction to Reframing and Responding to Children's Behaviour
FRI	06 JUN	10:00am - 12:00pm	Embracing Neurodiversity: A strengths-based approach <b>NEW</b>
TUE	10 JUN	10:00am - 12:00pm	The Director's Toolkit: Working With Management: Planning & Policy
WED	11 JUN	10:00am - 12:30pm	How the Exceeding Themes Influence Your Practices
WED	11 JUN	2:00pm - 4:00pm	Neuroscience and Behaviour <b>APST ALIGNED</b>
THU	12 JUN 19 JUN 26 JUN	2:00pm - 4:00pm	CHCPRT025 Identify and Report Children and Young People at Risk (RTO ID 90842) 3 part series <b>APST ALIGNED</b>
MON	16 JUN	11:00am - 1:00pm	Engaging with the Principles of Active Supervision <b>APST ALIGNED</b>
MON	16 JUN	1:00pm - 3:00pm	5 Ways To Better Conversations With Children <b>APST ALIGNED</b>
TUE	17 JUN	10:00am - 12:30pm	Understanding Self-Assessment and Quality Improvement Planning
TUE	17 JUN	1:00pm - 3:00pm	Practical Approaches to Programming for Educational Leaders
WED	18 JUN	10:00am - 12:30pm	Literacy in the Early Years <b>APST ALIGNED</b>
WED	18 JUN	1:00pm - 2:00pm	Music – who can live without it? <b>NEW</b>
THU	19 JUN	3:00pm - 5:00pm	Principles in Action: Critical Reflection and Ongoing Professional Learning <b>APST ALIGNED</b>
MON	23 JUN	11:00am - 1:00pm	Strong, Kind, Committed: Navigating the Circle of Security <b>NEW</b>
TUE	24 JUN	10:00am - 12:00pm	Observation in Action: Essentials for Early Childhood Educators <b>NEW</b>
TUE	24 JUN	3:00pm - 5:00pm	Principles in Action: Collaborative Leadership and Teamwork <b>APST ALIGNED</b>
WED	25 JUN	12:00pm - 12:45pm	Essential Insights <b>FREE MEMBER WEBINAR</b>
WED	25 JUN	1:00pm - 3:30pm	Connecting to the Joy of Children's Learning through Purposeful Observation <b>APST ALIGNED</b>
FRI	27 JUN	10:00am - 12:00pm	The Law and Regs for Nominated Supervisors
MON	30 JUN	10:00am - 12:00pm	Principles in Action: Equity, Inclusion and High Expectations <b>APST ALIGNED</b>

BOOK JUNE SESSION: [www.cela.org.au/training?Month=6](http://www.cela.org.au/training?Month=6)

NOTE: Times and dates are subject to change. Please check the website for additional sessions and updates: [www.cela.org.au/training](http://www.cela.org.au/training)

# SELF-PACED

## SESSION

A funds of knowledge approach to supporting children’s learning, development, and wellbeing **APST ALIGNED** **NEW**

Approved Provider and Governance Portal

CHCPRT025 Identify and Report Children and Young People at Risk (RTO ID 90842)

Child Protection NSW Refresher

Introduction to working with families experiencing poverty **APST ALIGNED** **NEW**

Leadership: Empowering and Engaging the Team – Micro Credential

Management Committee Training Portal

Rethinking behaviour – strengths-based approaches to inclusion **APST ALIGNED** **NEW**

Strengthening mainstream ECEC service engagement with Aboriginal and Torres Strait Islander communities **APST ALIGNED** **NEW**

Understanding Neuroscience to Support Children’s Behaviour – Micro Credential **APST ALIGNED**

Using effective communication to build and maintain relationships with families **APST ALIGNED** **NEW**

BOOK SELF-PACED: [www.cela.org.au/training/self-paced](http://www.cela.org.au/training/self-paced)



As a not-for-profit peak body, CELA uses any surplus from training fees to support sector-wide advocacy. Choosing CELA for your training supports your professional growth and strengthens the early education sector.

*NOTE: Times and dates are subject to change. Please check the website for additional sessions and updates: [www.cela.org.au/training](http://www.cela.org.au/training)*



# TRAINING SESSIONS BY NAME

5 Ways To Better Conversations With Children <b>APST ALIGNED</b>	<a href="#">LEARN MORE</a>
Acknowledging and Celebrating First Nations of Australia: A Starting Point- Webinar 2 Part Series <b>APST ALIGNED</b>	<a href="#">LEARN MORE</a>
A funds of knowledge approach to supporting children’s learning, development, and wellbeing - <b>SELF-PACED</b> <b>APST ALIGNED</b> <b>NEW</b>	<a href="#">LEARN MORE</a>
An Introduction to Reframing and Responding to Children’s Behaviour <b>NEW</b>	<a href="#">LEARN MORE</a>
Am I Ready?: Supporting transitions to school <b>NEW</b>	<a href="#">LEARN MORE</a>
Approved Provider and Governance Portal <b>SELF-PACED</b>	<a href="#">LEARN MORE</a>
Body Safety: Exploring Protection, Respect and Consent with Young Children <b>APST ALIGNED</b>	<a href="#">LEARN MORE</a>
Bringing the EYLF V2.0 to Life: An Overview of the How <b>APST ALIGNED</b>	<a href="#">LEARN MORE</a>
Building Genuine Partnerships with Families and Communities	<a href="#">LEARN MORE</a>
CHCPRT025 - Identify & Report Children and Young People at Risk (RTO ID: 90842) - 3 Part Webinar <b>APST ALIGNED</b>	<a href="#">LEARN MORE</a>
CHCPRT025 Identify and Report Children and Young People at Risk (RTO ID 90842) <b>SELF-PACED</b>	<a href="#">LEARN MORE</a>
Child Protection NSW Refresher - Self-Paced Online	<a href="#">LEARN MORE</a>
Children’s Rights Children’s Voices: Working With a Rights-Based Approach <b>APST ALIGNED</b>	<a href="#">LEARN MORE</a>
Compliance in Everyday Practice	<a href="#">LEARN MORE</a>
Connecting to the Joy of Children’s Learning through Purposeful Observation <b>APST ALIGNED</b>	<a href="#">LEARN MORE</a>
Dealing Effectively With Complaints	<a href="#">LEARN MORE</a>
Educator Wellbeing: Filling an Empty Bucket	<a href="#">LEARN MORE</a>
Effective use of Technology with children <b>APST ALIGNED</b>	<a href="#">LEARN MORE</a>
Embracing Neurodiversity: A strengths-based approach <b>NEW</b>	<a href="#">LEARN MORE</a>
Engaging with the Principles of Active Supervision <b>APST ALIGNED</b>	<a href="#">LEARN MORE</a>
Extending children’s learning through the art of intentional teaching	<a href="#">LEARN MORE</a>
How the Exceeding Themes Influence your Practice	<a href="#">LEARN MORE</a>
Inquiry Based Learning <b>APST ALIGNED</b>	<a href="#">LEARN MORE</a>
Introduction to working with families experiencing poverty <b>SELF-PACED</b> <b>APST ALIGNED</b> <b>NEW</b>	<a href="#">LEARN MORE</a>
Leadership: Empowering and Engaging the Team – Micro Credential <b>SELF-PACED</b>	<a href="#">LEARN MORE</a>
Leading your Team through Change	<a href="#">LEARN MORE</a>
Literacy in the Early Years <b>APST ALIGNED</b>	<a href="#">LEARN MORE</a>
Loose Parts Play <b>APST ALIGNED</b>	<a href="#">LEARN MORE</a>
Management Committee Training Portal <b>SELF-PACED</b>	<a href="#">LEARN MORE</a>
Music – who can live without it? <b>NEW</b>	<a href="#">LEARN MORE</a>
Neuroscience and Behaviour <b>APST ALIGNED</b>	<a href="#">LEARN MORE</a>
Numeracy in the Early Years <b>APST ALIGNED</b>	<a href="#">LEARN MORE</a>
Observation in Action: Essentials for Early Childhood Educators <b>NEW</b>	<a href="#">LEARN MORE</a>

FOR FURTHER DETAILS OR TO BOOK: [WWW.CELA.ORG.AU/TRAINING](http://WWW.CELA.ORG.AU/TRAINING) 

# TRAINING SESSIONS BY NAME

Play Theory And Behaviour	<a href="#">LEARN MORE</a>
Practical Approaches to Programming for Educational Leaders	<a href="#">LEARN MORE</a>
Practical Approaches to Programming for Educators <b>APST ALIGNED</b>	<a href="#">LEARN MORE</a>
Practices in Action: Assessment and evaluation for learning, development and wellbeing <b>APST ALIGNED</b>	<a href="#">LEARN MORE</a>
Practices in Action: Cultural responsiveness <b>APST ALIGNED</b>	<a href="#">LEARN MORE</a>
Principles in Action: Collaborative leadership and teamwork <b>APST ALIGNED</b>	<a href="#">LEARN MORE</a>
Principles in Action: Critical reflection and ongoing professional learning <b>APST ALIGNED</b>	<a href="#">LEARN MORE</a>
Principles in Action: Equity, inclusion and high expectations <b>APST ALIGNED</b>	<a href="#">LEARN MORE</a>
Practices in Action: Play based learning and intentionality <b>APST ALIGNED</b>	<a href="#">LEARN MORE</a>
Principles in Action: Sustainability <b>APST ALIGNED</b>	<a href="#">LEARN MORE</a>
Prepare Your Team For Assessment And Rating	<a href="#">LEARN MORE</a>
Professional and Ethical Practice in Action <b>NEW</b>	<a href="#">LEARN MORE</a>
Recognising Vulnerability to Support Children's Wellbeing and Development <b>APST ALIGNED</b>	<a href="#">LEARN MORE</a>
Rethinking behaviour – strengths-based approaches to inclusion <b>SELF-PACED</b> <b>APST ALIGNED</b> <b>NEW</b>	<a href="#">LEARN MORE</a>
Revisiting the Planning Cycle - Fresh eyes, fresh ideas <b>NEW</b>	<a href="#">LEARN MORE</a>
So Now You Are On The Committee	<a href="#">LEARN MORE</a>
Spotlight on the EYLF V2.0: Exploring the Changes <b>APST ALIGNED</b>	<a href="#">LEARN MORE</a>
Strengthening mainstream ECEC service engagement with Aboriginal and Torres Strait Islander communities <b>SELF-PACED</b> <b>APST ALIGNED</b> <b>NEW</b>	<a href="#">LEARN MORE</a>
Strong, Kind, Committed: Navigating the Circle of Security <b>NEW</b>	<a href="#">LEARN MORE</a>
Supporting Confident and Capable Babies and Toddlers <b>APST ALIGNED</b>	<a href="#">LEARN MORE</a>
The Director's Toolkit: Administrative Responsibilities	<a href="#">LEARN MORE</a>
The Director's Toolkit: Compliance & Quality	<a href="#">LEARN MORE</a>
The Director's Toolkit: Family And Community Partnerships	<a href="#">LEARN MORE</a>
The Director's Toolkit: Leadership & Advocacy	<a href="#">LEARN MORE</a>
The Director's Toolkit: The Team, Staff Relationships	<a href="#">LEARN MORE</a>
The Director's Toolkit: Working with Management, Planning & Policy	<a href="#">LEARN MORE</a>
The Law and Regs for Nominated Supervisors	<a href="#">LEARN MORE</a>
Understanding Neuroscience to Support Children's Behaviour — Micro Credential <b>SELF-PACED</b> <b>APST ALIGNED</b>	<a href="#">LEARN MORE</a>
Understanding and responding to behaviours that challenge <b>NEW</b>	<a href="#">LEARN MORE</a>
Understanding Play Theory <b>APST ALIGNED</b>	<a href="#">LEARN MORE</a>
Understanding Self-Assessment and Quality Improvement Planning	<a href="#">LEARN MORE</a>
Using effective communication to build and maintain relationships with families - Self-Paced Online <b>SELF-PACED</b> <b>NEW</b>	<a href="#">LEARN MORE</a>

FOR FURTHER DETAILS OR TO BOOK: [WWW.CELA.ORG.AU/TRAINING](http://WWW.CELA.ORG.AU/TRAINING) 

# Four ways to learn with CELA



## CALENDAR TRAINING

Join one of our popular live webinars - many sessions are scheduled on multiple times and dates in order to maximise availability.

[www.cela.org.au/training](http://www.cela.org.au/training)



## INSERVICE

Can't make the time or date of a calendar session or need something delivered specifically for your team? CELA can bring the training to you, no matter where you are.

[www.cela.org.au/training/in-service](http://www.cela.org.au/training/in-service)



## INDIVIDUAL MENTORING

We offer a unique mentoring program, completely tailored to your needs and specifications.

[www.cela.org.au/training/mentoring](http://www.cela.org.au/training/mentoring)



## SELF PACED

Explore our range of self-paced, online courses covering topics such as child protection, leadership, management committees, approved providers and behaviour support.

[www.cela.org.au/training/self-paced](http://www.cela.org.au/training/self-paced)

“

Training is so important and I believe CELA do a fabulous job. Especially with regards to providing access for remote services!”

Judy  
Preschool Director

“

I would recommend this course to other organisations because you will be reassured that educators have received high-quality, comprehensive training.

Andrea  
Educational Leader, Children's Services

# Why train with CELA?



## TRUSTED BY '000S

Over 9,100 ECEC professionals like you boosted their knowledge with CELA last year.



## COMMUNITY-DRIVEN

As a not-for-profit peak body, profits made from our training courses are funnelled back into our advocacy and professional development initiatives, so training with us benefits the entire sector.



## FLEXIBLE

We offer live webinar, self-paced and inservice options to cater to all service requirements and staff availabilities.



## ON THE PULSE

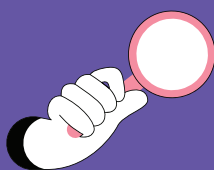
We offer over 50 topics including live webinar and self-paced options to fit every learning style and level of proficiency, with new topics added regularly.



## LEVERAGE OUR EXPERTISE

Our programs are designed and facilitated by seasoned experts, ensuring you're always learning from sector-leading professionals.

MEMBERS RECEIVE  
17% DISCOUNT ON  
TRAINING CALENDAR  
SESSIONS



Explore our calendar: [www.cela.org.au/training](http://www.cela.org.au/training)