



Excellence in Child Protection

CELA's comprehensive child protection training sets the standard for the sector



4	Our offering
10	How we assess
10	Our dedicated child protection team
12	Course options overview
15	Impact and reach
15	Testimonials
16	Our commitment to quality: A substantial investment in child protection training
17	Contact us
17	Become a CELA member and save
17	Your contribution to our advocacy
18	Find out more

Child protection training

Gain your certification with the course that sets the standard for the sector

CHCPRT025 Identify and Report Children and Young People at Risk (RTO ID 90842)

CELA's nationally recognised child protection course covers everything early and middle childhood education professionals need to know in order to feel confident and capable when it comes to child protection, no matter their level of experience in the sector.

- ▶ Tailored for the early education and care sector
- ▶ Informed by research
- ▶ Comprehensive approach
- ▶ Continuing support for learners
- ▶ Flexible delivery modes
- ▶ Plus: Bonus 117 page eBook walks you through every aspect of the course materials for ongoing reference

CHOOSE FROM 3 DELIVERY MODES



Scheduled Webinars

Engaging learning via our 2-hour live webinar sessions.

<https://bit.ly/3SSM5fJ>



Self Paced

Complete in your own time and convenience.

<https://bit.ly/3URaapM>



Inservice Training

Choose the date and time, and location.

To find out more call 1800 157 818



Our offering

Course content overview

CELA's 6-hour course duration is designed to be thorough, covering child protection legislation, how to identify and respond to children and young people at risk, reportable allegations and grooming and sexualised behaviours, and how to support children and young people dealing with trauma. Our approach ensures that participants are thoroughly prepared to manage situations involving children at immediate risk, while also being empowered to consistently make child-safe choices in their everyday interactions with children.

Our training sessions include discussions on the service's child protection policy and procedure. This enables ECEC professionals to align their training with their service's policies, further enhancing child protection practices and promoting a child-safe organisation.



Aligned to ECEC Standards



ECEC professionals completing child protection training with CELA can be confident that the program will cover all facets of child protection within ECEC environments, incorporating references to the EYLF V2.0, the Child Safe Standards, the NQS, and the most current ECEC research. Approved providers will be assured that their regulatory obligations concerning this subject have been comprehensively fulfilled, and that the children in their service are being supervised by educators whose understanding of this area has been suitably addressed.

Written by ECEC and child protection experts



Our course materials are written by early childhood education specialists with expertise in child protection and tailored to situations and scenarios faced in ECEC settings. We address ethical dilemmas and potential conflicts of interest that may arise across a diverse range of ECEC environments, including remote communities and varied socio-economic groups.

Informed by research



All course materials are informed by research and information gleaned from trusted sources, including the Australian Childhood Foundation, the National Framework for Protecting Australia's Children and Guidelines around implementing a trauma-informed approach to responding to children and young people who experience adversity. Please see the appendix for a full list of research that has informed our course.

Engaging and interactive learning experience



We use diverse learning materials, considering adult learning principles, including our reporting tool tailored for NSW child protection incident reporting. We continue to implement reflective journaling in our course, acknowledging its importance in enhancing ECEC practices. This includes reflective assessments that encourage consideration of roles, current practices, and support of children's rights and safety, linked to EYLF V2.0 and NQS.

Ongoing resource updates



Our specialised child protection team is committed to keeping our resources up-to-date with the latest research, statistics, legislation, and procedures. This dedication places us at the forefront of child protection training and ensures the most comprehensive and current materials are available.

Commitment to practical training requirements



We maintain specific tasks in our assessments that necessitate learners being actively engaged in employment or volunteering at an Early Childhood Education and Care (ECEC) service or working directly with children.

Although this is no longer a mandatory aspect of the CHCPRT025 assessment criteria, we adhere to its recommended implementation whenever feasible. Many Registered Training Organisations (RTOs) have opted to eliminate this requirement due to its complexity. However, we believe retaining it enhances the overall quality of our course. Additionally, this approach aligns with our course's bespoke design for the sector, ensuring we attract the appropriate target audience who are genuinely invested in child welfare and education.

Course content summary

Workshop	Overview of subject materials
Workshop 1: Legislation	<ul style="list-style-type: none"> ▶ Global and national frameworks such as the United Nations Convention on The Rights of the Child and The National Quality Framework in Relation to Child Protection ▶ Historical changes to child protection legislation and reporting processes in NSW ▶ The role of a mandatory reporter and educator in relation to NSW child protection legislation ▶ Relevant legislation and regulatory requirements for Mandatory Reporters in NSW
Workshop 2: Ethical and nurturing practices	<ul style="list-style-type: none"> ▶ Information about global and national frameworks such as the United Nations Convention on The Rights of the Child and The National Quality Framework in Relation to Child Protection ▶ How to reflect on ethical and nurturing practices that promote children’s rights ▶ Ethical decision-making in relation to child protection matters ▶ The child safe standards and how this framework and legislative requirements apply to your role as an ECEC professional ▶ Identifying and managing professional boundaries ▶ Reflecting on Duty of Care in ECEC Settings
Workshop 3: What is abuse?	<ul style="list-style-type: none"> ▶ Information on current child protection figures in Australia ▶ Risk and protective factors and how to support children and young people to increase protective factors and decrease risk factors ▶ Risk and protective factors in diverse domains ▶ What is considered harm types in NSW under the Children and Young Persons (Care and Protection) Amendment Act 2009 ▶ How to identify indicators of harm ▶ The Traffic Light Model and how to identify grooming and sexualised behaviours in children and young people
Workshop 4: Responding to disclosure	<ul style="list-style-type: none"> ▶ Reflecting on factors that influence disclosure ▶ How to act upon disclosure ▶ How to ask non-leading questions ▶ What to do and what not to do when responding to disclosure ▶ Practicing active listening skills ▶ Example of responding to disclosure (Stevie’s case scenario) ▶ Activities to further your knowledge and practice your responsiveness skills

Workshop

Overview of subject materials

Workshop 5: How to report

- ▶ When you should access the mandatory reporter guide (MRG)
- ▶ How to use the MRG
- ▶ The most common final decisions you could get when completing the MRG and what you should do after you get your MRG final decision
- ▶ When you should make a report to the Child Protection Helpline/ Department of Communities and Justice (DCJ)
- ▶ How to make a report to the Child Protection Helpline
- ▶ Exchange of information between prescribed organisations

Workshop 6: Long term impacts

- ▶ What is trauma
- ▶ Types of trauma
- ▶ How to support children, young people and families who have been through traumatic experiences by applying the strengths-based approach
- ▶ Practical strategies to support children and young in their trauma recovery
- ▶ Using the Circle of Security to support children's emotional wellbeing and relationship development




Flexible and accessible modes of delivery

We offer flexible learning options through self-paced online modules, customisable in-service training for organisations, and structured scheduled calendar sessions, catering to various learning styles and schedules.

In addition to the certified CHCPRT025 Identify and Report Children and Young People at Risk course, we also provide an extensive child protection refresher course, complete with workshops, videos, quizzes, activities, and a comprehensive resource booklet.



We offer our CHCPRT025 Identify and Report Children and Young People at Risk course in three different modes of delivery:

 Self-paced	 Inservice	 Scheduled calendar sessions
<p>Tailored for those who prefer learning at their own pace, or who can't make a scheduled webinar, this online option allows learners to complete the course according to their schedule. The course consists of 6 detailed modules and is estimated to take around 6 hours, excluding the time for assessment tasks. To support our students throughout their learning journey, we host weekly online support sessions.</p>	<p>Ideal for organisations, this mode allows services to select their preferred date and time for the training. We provide the flexibility of delivering the training via webinar and face-to-face at a workplace or a location of their choosing.</p> <p>Scenarios can be tailored to the context of the service community and location.</p>	<p>This option is perfect for those who prefer structured learning within a group setting. The course is delivered through three 2-hour webinar sessions across three weeks, which allows participants adequate time to absorb the information and fit the training into their work schedule.</p>

We also offer an in-depth child protection refresher course that includes 6 workshops, 10 videos, 7 quizzes, 22 activities and an in-depth resource booklet.

Continuing support for learners



Comprehensive booklet and resource library

Learners receive a comprehensive booklet covering all course materials, along with access to an online library with over 100 resource links.



Informative learner guide

Each student receives a learner guide that covers all six modules of the child protection training and includes factsheets and posters from trusted sources. The guide is designed to be a shared resource in the workplace for ongoing reference in child protection discussions.

Weekly support sessions



Weekly Zoom support sessions are available for students to discuss assessments, navigate learning platforms, and explore child protection topics. Additional support is offered via phone and email from Monday to Friday, 9 am to 5 pm.

How we assess

Our qualified assessors are responsible for marking assessment tasks and providing timely feedback to students. A competent grade is contingent upon students providing satisfactory answers to ALL questions in the assessment. Our team dedicates significant time and resources to marking, ensuring that statements of attainment are issued only to individuals who demonstrate the requisite knowledge and skills. To maintain the integrity of our process, assessments for in-service sessions are marked by the same assessor, thereby preventing plagiarism and collusion.

For the self-paced course, our team of experts review learner activity every week and provide feedback based on their completion of activities and required forum posts to facilitate engagement and support knowledge building. Self-paced students are only allowed to submit their assessment tasks after their online activity has been checked, and feedback has been given by one of our qualified trainers and assessors.

In the case of webinar attendees, we ensure that they have attended all sessions in full, as this is a prerequisite for them to be eligible for assessment tasks. Similarly, participants in our face-to-face sessions must attend the entire session to be allowed to submit their assessments.

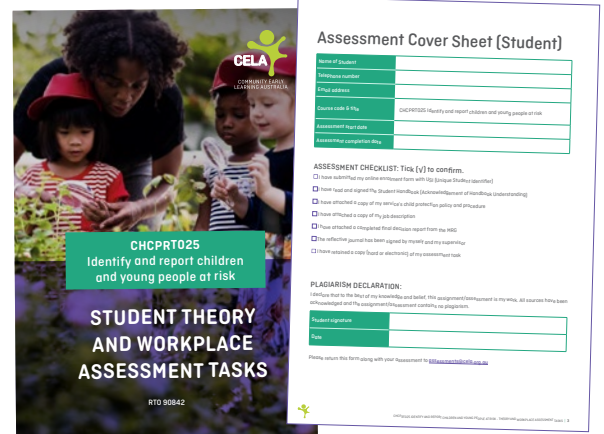
Our dedicated child protection team

Our child protection team is comprised of dedicated professionals who are committed to the safeguarding and welfare of children. They bring a diverse range of qualifications specifically relevant to child protection within the ECEC sector.

Each member of our team brings a unique perspective and set of skills, honed through years of hands-on experience in various facets of child protection and education. Their combined expertise ensures that our approach to child protection is not only grounded in the latest research and best practices but is also practical in addressing the real-world challenges faced by educators and caregivers in the ECEC sector. This blend of academic knowledge and practical experience makes our team exceptionally well-equipped to lead the way in child protection training and advocacy.

An overview of our team's qualifications:

- ▶ TAE40116 Certificate IV in Training and Assessment
- ▶ Bachelor of Education, Birth to Five
- ▶ Bachelor of Arts (Education Major)
- ▶ Graduate Certificate in Education
- ▶ Graduate Certificate in University Teaching and Learning
- ▶ Bachelor of Social Work
- ▶ Master of Educational Leadership
- ▶ Master of Teaching
- ▶ Master of Inclusive and Special Education
- ▶ Master of Criminology
- ▶ Doctor of Philosophy



Team bios

Aline Majado
CELA RTO Manager/
child protection specialist



Aline is an early childhood teacher with 21 years of experience working in education and child protection social projects. She has worked as a room leader, nursery manager and service director in Sydney for many years and has extensive experience in vocational training.

Aline holds a Bachelor of Arts, a Diploma, and a Bachelor of Education (EC), and a Certificate IV in training and assessment.

Eva Bowers
Child protection specialist
/facilitator and assessor



Eva is a social worker and educator with an extensive practice background in child protection. Eva spent a decade working as a case worker, casework specialist and training with the NSW Department of Communities and Justice.

She works with the Family Court and Federal Circuit Court of Australia as a Regulation 7 family consultant/child expert, in addition to her role in CELA's child protection team.

Michelle Urquhart
Child protection specialist/
facilitator and assessor



During more than 25 years in the ECEC sector, Michelle has worked in a variety of roles, including Centre Director, Family Day Care Educator and in management positions in private and community-based services. Her work has also included establishing new centres, identifying new business opportunities and drafting the Child-Safe Organisation framework, policy and procedures for a large not-for-profit.

Kerrie Maguire
Early education
specialist/course developer



Kerrie has been working in children's services for over 20 years and is one of Australia's leading early and middle education professional development specialists. Driven by a passionate belief in the significant impact that educators make in the lives of children, Kerrie is committed to driving quality service delivery. She has an in-depth understanding of child protection matters, the National Quality Framework, learning frameworks and supplementary regulations. Kerrie is a member of the Child Safety Working Group convened by the NSW Department of Education.

Karthika Viknarasah
Early education specialist
and facilitator



Karthika had a successful career as an accountant before following her passion for the early childhood sector. She has worked as an Educator, Early Childhood Teacher and Director in long day care and OOSH services. She holds a Master of Teaching degree and a Master of Educational Leadership degree and is a NESA Early Childhood Teacher Accreditation Supervisor. She has served on the board of a number of committees, peak bodies, community organisations and government advisory panels.

Dr Debra Williams
Early education
specialist and facilitator



Dr Debra Williams brings invaluable expertise to CELA gained over her 40+ year career in the sector where her roles included Director of community-based and private sector services. She is a Doctor of Philosophy and holds a Graduate Certificate in Research Methods and, a Bachelor of Arts with Diploma of Education Diploma of Management, among other credentials.

Course options overview

Below is a overview of our child protection courses and delivery methods available.

1. CHCPRT025 Identify and report children and young people at risk



CELA's CHCPRT025 Identify and Report Children and Young People at Risk series has recently been developed by our team of child protection specialists including early childhood education and care professionals, child protection and welfare specialists.

Who needs to take this course and when:

- ▶ ECTs who will become responsible people and do not hold a previous NSW-approved child protection training certificate (mandatory).
- ▶ Responsible people who do not hold a previous NSW-approved child protection training certificate (mandatory).
- ▶ Anyone in early education who wishes to undertake a NSW-approved child protection training certificate (optional).

Delivery options:

Delivery Method	Delivery details	Cost
Scheduled Webinars	<ul style="list-style-type: none">▶ 3-part webinar sessions via Zoom.▶ Each session is 2 hours	<ul style="list-style-type: none">▶ Member: \$215 (per person)▶ Non-Member: \$260 (per person)
In-Service Webinar	<ul style="list-style-type: none">▶ You choose: 3-part session, 2-part session or a whole day webinar session.	<ul style="list-style-type: none">▶ Member: \$230.40 (per person)*▶ Non-Member: \$256 (per person)*
In-Service Face-to-Face	<ul style="list-style-type: none">▶ 2-part session or full-day session - you choose.	<ul style="list-style-type: none">▶ Member: \$234 (per person)*▶ Non-Member: \$260 (per person)*
Online Self-Paced	<ul style="list-style-type: none">▶ 6-module online course▶ study at a time and place that suits you.	<ul style="list-style-type: none">▶ Member: \$205 (per person)▶ Non-Member: \$230 (per person)

* Minimum of 8 enrolments per in-service session

How to book

Visit: www.cela.org.au/CHCPRT025-webinar
or Contact us at training@cela.org.au

2. NSW Child Protection Refresher - Comprehensive 6-hour Course

With CELA's comprehensive Child Protection NSW Refresher course, your team will gain confidence and competence when it comes to required child protection knowledge, responsibilities, and legislation. In order to keep child protection awareness current and up to date, the NSW Government recommends undergoing refresher training every 12-24 months.

Who needs to take this course and when:

Responsible people and team members who have previously undertaken a NSW-approved child protection training certificate within the last 12-24 months (recommended best practice).

Delivery options:

Delivery Method	Delivery details	Cost
Online Self-Paced	<ul style="list-style-type: none"> ▶ Complete from the comfort of your home or workplace and at the time that suits you. 	<ul style="list-style-type: none"> ▶ Member: \$215 (per person) ▶ Non-Member: \$260 (per person)
In-Service Webinar	<ul style="list-style-type: none"> ▶ 6-hour training ▶ delivered as a 2-part session or a whole day session - you choose. 	<ul style="list-style-type: none"> ▶ Member Price Per Group: \$1,980.00* ▶ Non-Member Price Per Group: \$2,200.00*
In-Service Face-to-Face	<ul style="list-style-type: none"> ▶ 6-hour training ▶ Delivered as a 2-part session or full-day session - you choose. 	<ul style="list-style-type: none"> ▶ Member Price Per Group: \$1,980.00* ▶ Non-Member Price Per Group: \$2,200.00*

* Maximum of 25 enrolments per in-service session

How to book

Visit: www.cela.org.au/child-protection-refresher

or Contact us at training@cela.org.au

3. Hybrid CHCPRT025 Identify and report children and young people at risk & NSW Child Protection Refresher

 **NATIONALLY RECOGNISED ONLY FOR CHCPRT025 LEARNERS**

Delivery options:

Delivery Method	Delivery details	Cost
In-Service Webinar	<ul style="list-style-type: none"> Delivered as a 3-part session, 2-part session or full-day session 	<p>Refresher price (GST inclusive): Member: \$1,960.20 (per group)* Non-Member: \$2,178 (per group)*</p> <p>Plus, CHCPRT025 price: Member: \$230.40 (per person) Non-Member: \$256 (per person)</p>
In-Service Face-to-Face	<ul style="list-style-type: none"> Delivered as a 2-part session or full-day session, our in-service face-to-face session is a great way to achieve child protection training compliance for your team 	<p>Refresher price (GST inclusive): Member: \$1,960.20 (per group)* Non-Member: \$2,178 (per group)*</p> <p>Plus, CHCPRT025 price: Member: \$234 (per person) Non-Member: \$260 (per person)</p>

* Maximum of 25 enrolments per in-service session

4. Child Protection Overview

With CELA's informative Child Protection Overview course, your team will gain confidence and competence when it comes to required child protection knowledge, responsibilities, and legislation in 3 hours of training. In order to keep child protection awareness current and up to date, the NSW Government recommends undergoing child protection training every 12-24 months.

No matter what state or territory your service is located, this Child Protection Overview training can be customised to your jurisdiction.

Delivery options:

Delivery Method	Delivery details	Cost
In-Service Webinar	<ul style="list-style-type: none"> 2-part session or half-day session 	<ul style="list-style-type: none"> Member: \$999.90 (per group)* Non-Member: \$1,111 (per group)*
In-Service Face-to-Face	<ul style="list-style-type: none"> 2-part session or half-day session 	<ul style="list-style-type: none"> Member Price: \$1,009.80 (per group)* Non-Member: \$1,122 (per group)*

* Maximum of 25 enrolments per in-service session

How to book

Contact us at training@cela.org.au to organise your in-service session

Impact and reach

As a peak body for early childhood education and care, CELA has been trusted by quality early education services to provide comprehensive child protection training for over 10 years. We are a member of the Child Safety Working Group convened by the NSW Department of Education, and regularly update our knowledge and advice around best practices for child protection. We have also contributed to resource development for the Office of the Children's Guardian and are the preferred choice for numerous local government areas, evidenced by a high rate of returning clients.

In 2023, our certified child protection training program marked a significant milestone with over 950 educators enrolled from a diverse range of geographical locations, spanning across dozens of services. This substantial enrolment underscores our program's wide-reaching impact and its recognition as a leader in child protection education. Notably, 450 educators have completed their certification this year, demonstrating our program's high engagement level.



Testimonials

“ CELA's child protection training is very informative, and the platform is easy to navigate with all information needed to complete the training course. The team at CELA are always willing to help along the way and have been great in assisting myself and my employees throughout the training process.”

Gemma Laroche
Acting Director and Educational Leader Little Angels at the Spot Preschool

“ For anyone considering child protection training, I would definitely recommend CELA. Their range of delivery options and the breadth of choices they offer are great. The team gained a good understanding of the topics and requirements and the interactive trainers, whom I've experienced online, are excellent at keeping”

Natalie van Twest
Quality Assurance and Pedagogical Manager Children's Services, Penrith City Council

Our commitment to quality: A substantial investment in child protection training

We recognise the crucial role of high-quality child protection training in fostering child-safe practices.

Despite being revenue neutral we remain committed to offering this course, as we believe in its vital importance. Our substantial annual investment ensures we have the best educators and trainers in the field— professionals who bring a wealth of experience and specialised knowledge to our program and who undertake continual updating of course materials to reflect the most recent research and best practices in child protection.

Additionally, a key part of our investment is allocated to the technological infrastructure of the online course, which is run on the Moodle platform. This commitment to technological excellence means that our course is accessible and adaptable to a variety of learning styles and preferences, ensuring that every participant, regardless of their technical proficiency, can fully benefit from the training.

Moreover, our investment in the Moodle platform allows for the integration of various multimedia elements, interactive modules, and real-time communication tools. These features not only make the learning process more dynamic and interactive but also allow for a more personalised learning experience that can be tailored to individual needs and learning paces.



Contact us

For further information or to book contact us on
1800 157 818 or training@cela.org.au.

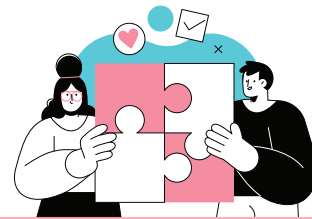
For specific child protection-related questions, contact alinemajado@cela.org.au



Become a CELA member and save

Did you know members receive up to 20% discount on training, consultancy and mentoring services? Join over 27,000 early education professionals and committee members, who through their service's membership, receive expert advice, consultancy, resources and training to improve practice and service delivery.

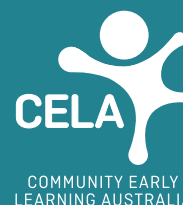
FIND OUT MORE:
www.cela.org.au/membership



Your contribution to our advocacy

Through targeted learning and development, CELA promotes the professional growth of educators and teachers to meet the needs of their communities. In 2023, CELA trained over 10,200 sector professionals across all qualification levels. Training with CELA benefits the entire sector as profits from training fees are reinvested into our advocacy work, membership benefits and professional development initiatives.

Find out about our other child protection courses



Body Safety: Exploring Protection, Respect and Consent with Young Children

This webinar will help professionals to understand the concepts of respect, body safety and consent. This will include practical skills and knowledge for implementing and teaching these concepts amongst infants, toddlers and preschoolers.

We will also discuss how these topics and strategies can be introduced to families at the service, encouraging them to learn more and teach these concepts in the home.



NSW Child Safe Standards and Child Protection Overview

This interactive workshop will help participants learn or refresh their knowledge of **NSW Child Safe Standards and Child Protection Legislation in early childhood education and care settings, identify current practices, and recognise areas for improvement when supporting the implementation of the Child Safe Standards in your service.**

The workshop is offered in two tailored sessions:

1. For educators
2. For leaders



FIND OUT MORE

www.cela.org.au/training?topic=child-protection